

gfpagriculture.co.uk



PART OF GFP  
AGRICULTURE LTD

# Conservation, Environmental & Game Cover



Seed  
Guide  
2026



# INTRODUCTION



*Welcome* to the new **Belmont guide for 2026. With an ever-increasing focus on sustainability the dedicated Belmont team are here to help you.**

We can support your business as you navigate your way through the opportunities available now and in the future, with our technical knowledge developed over many years.

Farming continues to change – Belmont Seeds is right by your side to ensure you make the most of what lies ahead.

**For quality, advice, service and products, choose Belmont**  
*– We care about our customers*



---

## GROWING OPPORTUNITIES

**The pace of change in agriculture hasn't slowed, farmers continue to adapt to difficult growing conditions, challenging markets and evolving policy. Against this backdrop the need to build a productive and resilient farm business has never been more important, this continues to be our main focus.**

At GFP our customers benefit from joined-up advice and the latest insight from across sustainable crop production. Offering environmental expertise, and specialist support

across grain marketing, soil health, sustainability, agronomy, and nutrition, all supported by a market-leading R&D programme. Our unique position in the sector also enables us to deliver pioneering solutions across the whole supply chain.

In this guide, you'll find seed mixtures suitable for conservation, green cover, game cover and forage. Our products comply with a range of funding opportunities, including options from Countryside Stewardship (CS), the Agri-Environment and Climate Scheme (AECS) and the Sustainable Farming Incentive (SFI). With the broadness of our available range, we can cater to your individual farm.



# SUSTAINABLE FARMING INCENTIVE (SFI) SCHEME AND COUNTRYSIDE STEWARDSHIP OPTIONS

Codes	Action titles	Payment (£)	Page
AHL 1 / ABI / CAHL 1	Pollen and Nectar flower mix	739/ha	5
IPM 2 / AB8 / CIPM 2	Flower rich grass margins, blocks, or in field strips	798/ha	6
AHL 2 / AB 9 / CAHL 2	Winter bird food on arable land and horticultural land	853/ha	7-9
ABI2 / AHW 2	Supplementary feeding for farmland birds	732/t	10
NUM 3 / ABI 5 / CNUM 3	Legume fallow	593/ha	12
ABI6 / AHW 1	Autumn sown bumblebird Food source for birds & nectar feeding insects	747/ha	13
AHL 4 / SW1	4-12m grass buffer strip on arable and horticultural land	515/ha	13
AHL 3 / SW3	Grassy field corners or blocks	590/ha	13
SAM 3 / GS 4 / CSAM 3	Herbal leys	382/ha	14
SOH2	Multi species spring sown cover crop	163/ha	15
SOH3	Multi species summer sown cover crop	163/ha	15
SOH4	Winter cover following maize crops	203/ha	16
SAM 2 / SW6 / CSAM 2	Multi species winter cover crops	129/ha	36

## IMPORTANT NOTE:

**Whilst we have taken every care in the preparation of this guide it is not a substitute for reading the official rules and regulations associated with the various schemes currently in operation.**

It is vitally important that you keep fully up-to-date with the latest regulations in force at the time you make your seed purchasing decisions. This information can normally be obtained from various sites on the internet or via direct contact with the appropriate government offices in your locality.



## ABI/ALH 1/CAHL 1 OPTIONS



### Annual Pollen and Nectar Mix

- A new pollen and nectar mixture for those customers wishing to rotate around the farm annually

### Why choose this product?

For use as a pollen and nectar booster.

**ABI/ALH 1/  
CAHL 1 Options**

### Mixture Formulation – 15kg pack. Drill at 15kg/ha

- Crimson Clover
- Berseem Clover
- Linseed
- Red Clover
- Phacelia
- Bird's Foot Trefoil
- Ox-Eye Daisy
- Black Knapweed
- Vetch



### Grass Free Pollen and Nectar Mix

- A nectar mix that enables grass weeds to be controlled, helping to extend its delivery over multiple years

### Why choose this product?

For use as a pollen and nectar booster.

**ABI/ALH 1/  
CAHL 1 Options**

### Mixture Formulation – 20kg pack. Drill at 20kg/ha

- Sainfoin
- Vetch
- Lucerne
- Birdsfoot trefoil
- Alsike clover
- Red clover
- Fenugreek
- Black medick
- Yellow blossom clover
- Phacelia
- Common knapweed
- Red & White Campion
- Musk Mallow



## AB8/IMP 2/CIPM 2 OPTIONS



### Economy Flower Rich Grass Mix

- A new economy version of our popular Flower Rich Grass mixture. Now offering a cheaper alternative with 90% grass and 10% native flowers/agricultural legumes

### Why choose this product?

A colourful mixture of grasses and wildflowers.

**AB8/IMP 2/CIPM 2  
/CAHL1 Options**

### Mixture Formulation – 20kg pack. Drill at 20kg/ha

- |                       |                    |                               |
|-----------------------|--------------------|-------------------------------|
| • Creeping red fescue | • Hard fescue      | • Smooth stalked meadow grass |
| • Chewings fescue     | • Sainfoin         | • Vetch                       |
| • Alsike clover       | • Ribwort plantain | • Birdsfoot trefoil           |
| • Oxeye daisy         | • Burnet           | • Yarrow                      |
|                       |                    | • Red clover                  |
|                       |                    | • Knapweed                    |



### Flower Rich Grass Mix

- A versatile wild flower and grass mix made up of 90% grass and 10% native flowers/agricultural legumes

### Why choose this product?

A colourful mixture of grasses and wildflowers.

**AB8/IMP 2/CIPM 2  
/CAHL1 Options**

### Mixture Formulation – 20kg pack. Drill at 20kg/ha

- |                   |                |                               |
|-------------------|----------------|-------------------------------|
| • Red fescue      | • Hard fescue  | • Smooth stalked meadow grass |
| • Chewings fescue | • Sainfoin     | • Crested dogtail             |
| • Bent            | • Black medick | • Birdsfoot trefoil           |
| • Self heal       | • Red clover   | • Common knapweed             |
| • Sorrel          | • Ox-eye daisy | • Yarrow                      |
|                   |                | • Vetch                       |
|                   |                | • Wild carrot                 |
|                   |                | • White campion               |



### Enhanced Flower Rich Grass Mix

- A new enhanced version of our popular Flower Rich Grass mixture (as above) now offering the option of 80% grass and 20% native flowers/agricultural legum

### Why choose this product?

A colourful mixture of grasses and wildflowers.

**AB8/IMP 2/CIPM 2  
/CAHL1 Options**

### Mixture Formulation – 20kg pack. Drill at 20kg/ha

- |                   |                |                               |
|-------------------|----------------|-------------------------------|
| • Red fescu       | • Hard fescue  | • Smooth stalked meadow grass |
| • Chewings fescue | • Sainfoin     | • Crested dogtail             |
| • Bent            | • Black medick | • Black knapweed              |
| • Red clover      | • Yarrow       | • Ladys bedstraw              |
| • Ox-eye daisy    | • Red campion  | • White campion               |
|                   |                | • Birdsfoot trefoil           |
|                   |                | • Self-heal                   |
|                   |                | • Musk mallow                 |
|                   |                | • Field Scabious              |

# ONE YEAR WINTER BIRD FOOD MIXTURES

## AB9/AHL 2/ CAHL 2 OPTIONS



### Belmont 1 year WBSM Bird Mix

- Fantastic brood rearing potential
- Good spread of seed shedding dates
- Tried and tested by our customers
- Herbicide tolerant
- Spring sown

### Why choose this product?

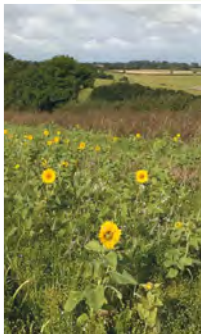
Easy to grow with herbicide tolerance.

**AB9/AHL 2/  
CAHL 2 Option**

### Mixture Formulation – 25kg pack. Drill at 50kg/ha

- Reed Millet
- Red and White Millet
- Triticale
- Linseed
- Dwarf Sorghum
- Wheat and Barley
- Fodder Radish

★ Now includes: **Extra Dwarf Sorghum**



### Belmont 1 year WBSM Bird Mix with Sunflowers

- Excellent feed source for game and farmland birds from September onwards
- Spring sown
- Fantastic for attracting insects

### Why choose this product?

A Colourful mixture  
Makes excellent driving cover

**AB9/AHL 2/  
CAHL 2 Option**

### Mixture Formulation – 25kg pack. Drill at 50kg/ha

- Red, White and Reed Millet
- Spring Triticale, Wheat and Barley
- Dwarf Sorghum
- Sunflowers
- Fodder Radish
- Linseed

★ Now includes: **Extra Dwarf Sorghum and Sunflowers**



### Jack Russell

- Fantastic feed source for one year
- Herbicide tolerant
- Inclusion of grain sorghum gives structure and winter hardiness
- Seed shed from early Autumn

### Why choose this product?

A herbicide tolerant mixture with fantastic colour.

**AB9/AHL 2/  
CAHL 2 Option**

**STOMP AQUA  
TOLERANT**



### Mixture Formulation – 20kg pack. Drill at 50kg/ha

- Spring Triticale
- White Millet
- Sunflower
- Grain Sorghum
- Red Millet
- Fodder radish
- Linseed
- Reed Millet

# TWO YEAR WINTER BIRD FOOD MIXTURES

## AB9/AHL 2/CAHL 2 OPTIONS



### Belmont 2 year WBSM Mix

- A combination of small seed bearing crops
- Succession of feed sources
- Quinoa provides excellent feed for both wild birds and reared game
- Spring sown
- Pre and post emergence herbicide control options available

### Why choose this product?

A great mixture to provide a succession of food.

**AB9/AHL 2/  
CAHL 2 Option**

### Mixture Formulation – 10kg pack. Drill at 20kg/ha

- |                   |                    |              |
|-------------------|--------------------|--------------|
| • Linseed         | • Gold of Pleasure | • Kale Blend |
| • Kale/Rape cross | • Fodder Radish    | • Mustard    |
| • Phacelia        | • Utopia           | • Quinoa     |
| • Chicory         |                    |              |



**A donation made to Gamekeepers Welfare Trust on every sale of this product.**



### Wildlife Winter Holding Cover

- Delivers feed for up to two years
- Dedicated mix to fulfil the requirement of winter bird food

### Why choose this product?

Cover and colour, Synergy treated to improve establishment.

**AB9/AHL 2/  
CAHL 2 Option**

### Mixture Formulation – 22kg pack. Drill at 22kg/ha

- |   |                 |                    |               |
|---|-----------------|--------------------|---------------|
| • Buckwheat                             | • Coleor Kale   | • Marrow Stem Kale | • Turnip Rape |
| • Kings Kale Rape                       | • White Mustard | • Sandoval Quino   | • Phacelia    |
| • Stand and Deliver (perennial chicory) | • Sunflowers    | • Utopia           |               |
| • Gold of Pleasure                      |                 |                    |               |



### Kale Free Biennial Mixture

- An economical yet highly effective winter bird food option

### Why choose this product?

For customers concerned about Flea Beetle.

**AB9/AHL 2/  
CAHL 2 Option**

### Mixture Formulation – 25kg pack. Drill at 25kg/ha

- |                 |                   |                    |           |
|-----------------|-------------------|--------------------|-----------|
| • White Millet  | • Stubble Turnips | • Sweet Fennel     | • Linseed |
| • Chicory       | • Phacelia        | • Spring Triticale |           |
| • Perennial Rye | • Quinoa          | • Dwarf Sorghum    |           |

# NEW MIXTURE



## Take Off Mix

- Combines effective weed control with a diverse range of plant species.
- Delivers Feed and Cover over two years.

## Why choose this product?

A fantastic mixture to provide a succession of food for farmland birds.

**AB9/AHL 2/  
CAHL 2 Option**

## Mixture Formulation – 25kg pack. Drill at 25kg/ha

- |                      |                 |                     |
|----------------------|-----------------|---------------------|
| • Coleor Kale        | • Fodder Radish | • Perennial Chicory |
| • Gold of Pleasure   | • Linseed       | • Dwarf Sorghum     |
| • Red & White Millet | • Triticale     | • Utopia            |



## Summer Sown Wild Bird Seed Mix

- Summer sown AHL 2 option for June / July drilling-not good game cover but a great source of winter bird food

## Why choose this product?

A fantastic mixture to provide a succession of food for farmland birds.

**AB9/AHL 2/  
CAHL 2 Option**

## Mixture Formulation – 15kg pack. Drill at 15kg/ha

- |                    |                   |             |
|--------------------|-------------------|-------------|
| • Fodder Radish    | • White Mustard   | • Linseed   |
| • Gold of Pleasure | • Sandoval Quinoa | • Buckwheat |



## Economy 1 Year Wild Bird Seed Mix

- This mixture is ideal where you would like a cereal dominant mix. An economic, annual option choice.

## Why choose this product?

An effective new economy mix for winter bird food.

**AB9/AHL 2/  
CAHL 2 Option**

## Mixture Formulation – 25kg/500kg pack. Drill at 50kg/ha

- |                    |                 |                |
|--------------------|-----------------|----------------|
| • Spring Triticale | • Spring Barley | • Spring Wheat |
| • Oil Radish       | • White Millet  | • Red Millet   |

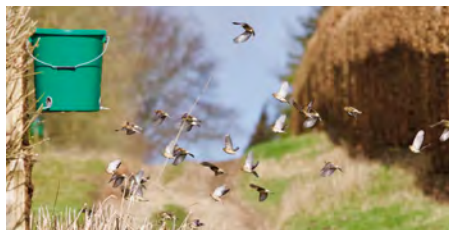
## SUPPLEMENTARY FEEDING ABI2/AHW 2 OPTIONS

### For Farmland Birds

Providing the best wild bird seed mixtures for farmland birds is critical.

Implemented alongside wild bird seed options, supplementary feeding sees the combination of wheat and oilseed rape fed with small seeds such as sunflower hearts and millet. To support agreement holders with these options, we provide the following:

- **Seed mixtures or straights** of the highest quality to meet agreement needs. These can be supplied as a whole mix or as a pre-mix to go with home saved cereals/oilseeds. Available in 25kg or bulk bags to meet your requirements.
- **Weatherproof supplementary feeding diaries** to help ensure compliance, with entry pages for a feeding 'year' and a handy farmland bird identification page.
- **Perdix feed buckets** – whilst most food needs to be ground-fed, these vermin-proof buckets are ideal for key locations where a targeted approach is required. Buckets can be mounted out of reach of game birds.



We offer an automated feed bucket to save time and effort.

Holding game birds from summer through to the end of a shoot season can be challenging. To help hold partridges and pheasants where and when they are needed, Belmont has created two special holding mixtures.

Fed on the ground or in hoppers, these mixtures have been formulated to provide superior nutritional content and entertainment for game birds. Kibbled maize, with or without aniseed, is also available.

Seed is available in bulk bags and 20-25kg bags, both at competitive prices and mixes can be adapted to suit individual needs.



Component	Premium Premix	Premium Full Mix	Economy Premix	Economy Full Mix	Premium Small Seed Mix	Economy Small Seed Mix
	KSUPP A	KSUPP B	KSUPP C	KSUPP D	KSUPP E	KSUPP F
Cereal Blend		✓		✓		
Oil Seed Rape	✓	✓	✓	✓		
Oats						✓
Canary Seed	✓	✓	✓	✓	✓	✓
Black Sunflowers	✓	✓	✓	✓	✓	✓
Sunflower Hearts	✓	✓			✓	
Linseed	✓	✓			✓	✓
Feed White Millet	✓	✓	✓	✓	✓	✓
Feed Red Millet						✓
Bag Size	25kg/500kg	25kg/500kg	25kg/500kg	25kg/500kg	25kg/500kg	25kg/500kg



INTRODUCING

# Kibbled Maize

**High quality, cleaned, screened, graded and aspirated (minimal dust) free flowing quality Kibbled Maize.**

The grain is crushed to allow easy digestion.

Maize provides an excellent source of digestible energy through rich concentrations of starch.

Very easy to mix your own supplements to enhance food value and hold birds.

AVAILABLE IN BAGS OF

25KG

500KG

1000KG

LIMITED AMOUNTS AVAILABLE



Please call  
Sally Thacker on  
**01652 636444**  
for further info  
or to make  
an order.

# LEGUME FALLOW OPTIONS

## AB15/NUM 3/CNUM 3 OPTIONS



### Annual Legume Fallow Mixture

- A new legume fallow mixture for those customers wishing to rotate a grass-free mix around the farm annually

### Why choose this product?

For SFI agreements where an annually sown grass free mix is required.

**NUM 3/CNUM 3  
Options**

### Mixture Formulation – 12kg pack. Drill at 12kg/ha

- Berseem Clover
- Red Clover
- Crimson Clover
- White Clover
- Balansa Clover
- Yellow Trefoil
- Vetch



### Grass Free Legume Mix

- Applicable for agreements commencing from 2022 onwards where a grass-free legume mix can be used
- Non Ryegrass mixture

### Why choose this product?

Flowers between early and late summer.

**AB15/NUM /CNUM 3  
Options**

### Mixture Formulation – 15kg pack. Drill at 15-20kg/ha

- Alsike Clover
- Yellow Trefoil
- Sainfoin
- Lucerne
- Red Clover
- Vetch



### Legume & Timothy Mixture

- Applicable for agreements commencing from 2021

### Why choose this product?

Helps compete with Black grass.

**AB15/NUM /CNUM 3  
Options**

### Mixture Formulation – 17kg pack. Drill at 17-20kg/ha

- Crimson Clover
- Yellow Trefoil
- Lucerne
- Red Clover
- Vetch
- Timothy
- Sainfoin

## AB16/AHW 1 OPTION



### Autumn Sown Bumblebird

- Pollinator habitat creation
- Cover for two years

### Why choose this product?

Ideal to attract bumblebees, solitary bees, butterflies and hoverflies.

**AB16/AHW 1 Option**

### Mixture Formulation – 25kg Pack. Drill at 25-30kg/ha

- |                     |               |                 |                 |
|---------------------|---------------|-----------------|-----------------|
| • Triticale         | • Wheat       | • Fodder Radish | • Alsike Clover |
| • Gold of Pleasure  | • Coleor Kale | • Linseed       | • Red Clover    |
| • Birdsfoot Trefoil | • Vetch       | • Phacelia      | • Lucerne       |
| • Crimson Clover    |               |                 |                 |

## SW1, SW3, SW4, AHL 3, AHL 4 OPTION



### Species Rich Grass Mixture

- A blend of finer grasses suited to grass margins and field corners. Fast establishing and easy to maintain

**SW1, SW3, SW4,  
AHL 3 /CAHL 3, AHL 4  
/CAHL 4 Option**

### Mixture Formulation – 20kg pack. Drill at 20kg/ha

- |                      |               |                               |
|----------------------|---------------|-------------------------------|
| • Slender Red Fescue | • Bent        | • Red Fescue                  |
| • Crested Dogtail    | • Hard Fescue | • Smooth Stalked Meadow Grass |



### Basic Stewardship Grass Mixture

- A general purpose blend of fine and tussock grasses which are ideal for buffering watercourses, creating nesting cover and beneficial insect habitats

**SW1, SW3, SW4,  
AHL 3 /CAHL 3, AHL 4  
/CAHL 4 Option**

### Mixture Formulation – 20kg Pack. Drill at 20kg/ha

- |             |                               |              |               |
|-------------|-------------------------------|--------------|---------------|
| • Cocksfoot | • Hard Fescue                 | • Red Fescue | • Tall Fescue |
| • Timothy   | • Smooth Stalked Meadow Grass |              |               |

### How to calculate the area of buffer strips to the nearest hectare

Measure the length of each strip in metres.  
To convert this to hectares:-

4 metre x length of strip = Area in metres squared, divide by 10,000 = hectares

6 metre x length of strip = Area in metres squared, divide by 10,000 = hectares

## GS4/SAM 3/CSAM 3 HERBAL LEYS OPTIONS



### CSAM 3 Herbal Ley

- A new Herbal ley mixture for SFI 24 applications

#### Mixture Formulation – 12kg pack. Drill at 30kg/ha

- Inter Perennial Ryegrass
- Late Perennial Ryegrass
- Timothy
- Red Clover
- White Clover
- Birdsfoot Trefoil
- Sheep's Burnet
- Plantain
- **Chicory inclusion available on request**

### Why choose this product?

A mixture of grasses, legumes and herbs to provide varied root structures.

Produces a high volume of forage with minimal use of inorganic fertiliser.

Improve resilience to drought.

Help improve and maintain soil structure, carbon, biology and fertility.

**CSAM 3 Option**



### Belmont GS4/SAM 3

- A general purpose grass and herbal ley which provides a vigorous sward that can be cut or grazed by cattle and sheep.

#### Mixture Formulation – 13kg pack. Drill at 32kg/ha

- Intermediate Perennial Ryegrass
- Fennel
- Late Perennial Ryegrass
- Meadow Fescue
- Timothy
- Creeping Red Fescue
- Cocksfoot
- Late Flowering Red Clover
- Medium White Clover
- Alsike Clover
- Birdsfoot Trefoil
- Sainfoin
- Sheep's Burnet
- Ribwort Plantain
- Sheep's Parsley
- Yarrow

### Why choose this product?

High nutritional value for livestock.

Provides enhanced food supplies and habitats for invertebrates.

Improves soil structure by improving natural drainage

Rich mix of legumes and herbs.

**GS4/SAM 3/  
CSAM 3 Options**



### Legume and Herb Mixture

- This herb and legume mixture has been designed to be added to long term pasture mixtures to be grazed by cattle and sheep or cut for silage.
- Perfect for overseeding existing grass swards to enhance species diversity.
- Improves soil structure and creates a beneficial habitat for pollinators.

### Why choose this product?

Good habitat for pollinators.

**GS4/SAM 3/  
CSAM 3 Options**

#### Mixture Formulation – 22kg pack. Drill at 22kg/ha

##### Legume Species

- Red clover
- Yellow Trefoil
- Sainfoin
- Alsike Clover

##### Herbal Species

- Ribwort Plantain
- Yarrow
- Burnet
- Sheep's Parsley
- Perennial Chicory

**Legume Straights are also available.**

# MULTI SPECIES SUMMER SOWN COVER CROP

## SOH 2/SOH 3 OPTIONS



Establish a multi species cover crop mix during the spring usually between March and May.

### Why choose this product?

Protect the soil surface.  
Provide root growth that benefits soil structure.

#### SOH 2 Option

**You must use a rapid growing seed mix that can contains at least 4 species, this must include 2 species from 2 or more of the following plant species.**

- Brassica
- Legume
- Herbs
- Cereal and grasses

#### Species you could use:

- Vetch
- Buckwheat
- Linseed
- Phacelia



Establish a multi species cover crop mix during the summer months usually between June and August.

### Why choose this product?

Supports soil biology.  
Minimises nutrient leaching.  
Helps soil erosion and run off.

#### SOH 3 Option

**You must use a rapid growing seed mix that can contains at least 4 species, this must include 2 species from 2 or more of the following plant species.**

- Brassica
- Legume
- Herbs
- Cereal and grasses

#### Species you could use:

- Black Oats
- Vetch
- Buckwheat
- Berseem Clover
- Linseed
- Phacelia



# WINTER COVER FOLLOWING MAIZE

## SOH 4 Option

After harvesting a maize crop, establish a winter cover crop usually no later than around mid-October.

### Choosing your quick growing cover crop

Can be a mix such as:

- Rye
- Vetch
- Phacelia
- Barley
- Mustard
- Tillage Radish

Can be a single crop such as:

Grass such as Italian Ryegrass.

### Why choose this product?

Reduce the risk of soil erosion and surface run off.

Help take up nutrients.

Reduce nitrate leaching through the soil profile.



SOH 4 Option



# ESSENTIAL GUIDE TO MAIZE GROWING

## Soil type

When choosing where to grow maize on the farm, attention should be paid to the following factors when selecting the specific growing sites. Altitude – Avoid high altitude sites which will be colder. As a rule of thumb, growers should consider 600 feet (180 metres) above sea level to be very marginal. However, individual fields above 600 feet with lighter, drier soil types that will warm up quickly in spring can be considered.



**Aspect** – Ideally, any fields selected for maize should face south, and be sheltered from wind. Fields to avoid are those which are very exposed, or have heavy, poorly drained soils, and any locations which are known to be 'frost pockets'. An established crop at 2-6 leaf stage can be set back 2-3 weeks by a late May frost. Avoid steeply sloping fields, especially near to water courses to reduce the risk of nitrate leaching from runoff.

**Soil depth** – To support its bulk and height, a maize plant requires a very extensive root system. Ideally, crops should be grown where there is at least 2m of soil. If soil depth is less than 1m, then root development is impaired and crops are stunted.

## Seedbed preparation

The elimination of soil compaction and preparation of a fine seedbed are essential for successful crop growth.

To avoid compaction becoming an issue, the soil structure needs to be checked immediately after the previous crop and then sub-soiled as required, carried out in the previous autumn – under dry conditions.

### Fertiliser

Index	0	1	2	3	4+
<b>N</b>	120	80	40	20	0
<b>P</b>	110	85	60M	20	0
<b>K20</b>	230	205	180M (2-) 155 (2+)	110	0

Where organic manures are used the value of the nutrients should be included in the calculation.

Seedbed cultivation can be left until immediately prior to drilling in April or May. The top layer of fine soil needs to have a depth of about 5cm.

## Sowing maize

Do not be tempted to drill too early – as this may expose the crop to frost damage if the growing point is above the soil surface. Maize seed should not be sown until the soil temperature has stabilised to a minimum of 8°C. A soil temperature probe can be used to determine the temperature at seed depth. Nor should seed be drilled if night frosts are still anticipated.

In most years, temperatures reach suitable levels between mid April through to early May, depending on the location.

## Weed control (pre-emergence)

It is important to know the likely weed burden of land on which maize is to be grown, and then prepare a strategic weed control programme. Herbicides should be selected according to the weed species that are likely to be present. For maize, a range of approved pre-emergence and post-emergence herbicides are available. However, where heavy infestations of weed, for

example, couch are present, these are best controlled by applying glyphosate before any cultivation.

### Weed control (post-emergence)

Weeds can easily out-compete maize crops, swamping them during the early establishment phase in May and June.

Post-emergence herbicides should be applied as soon as possible after the crop has emerged, as early weed competition has a big effect on final yields. Post-emergence herbicides can be applied up to a plant size of 8 leaves. If left any later, it also becomes more difficult to move through a crop without damaging it.

For information on choice of herbicide, growers should seek an agronomist's advice.



#### All Season

- Our No.1 selling maize variety
- Ideal in a wide range of situations
- Proven mainstay on many successful shoots
- Never lets us or our customers down
- **Limited availability with ROOT BOOST Phosphite seed treatment at no extra cost**
- Packed in 1 acre (45,000 seed) units
- Crop Height 180-200cm

#### Why choose this product?

Well proven over a number of years and used again and again – over 4000 acres sold annually.

**TOP SELLER**



#### Late Maize

- Late maturing variety
- Limited to no cob development
- Reduced feed source for rats and badgers
- Tried and tested across UK

#### Why choose this product?

With limited cob development, Belmont Late Maize will reduce rat and badger damage.



#### Maize Blend

- A blend of early, intermediate and late varieties
- All varieties selected for good early vigour and standing ability
- Wider feeding window from extended cob development
- If on a tight budget this blend is available with fungicide treatment only
- Packed in 1.1 acre (50,000 seed) units
- Crop Height 180-200cm

#### Why choose this product?

Belmont Maize Blend will achieve a spread of maturity cob ripeness and supply a valuable source of feed.

# ESSENTIAL GUIDE TO SORGHUM GROWING

## Soil type/site selection

Light-medium soils are ideal for sorghum, avoid heavy poorly drained fields and especially those with heavy weed infestations.

## Seedbed and sowing methods

Early preparation of the seedbed, followed by a fallow period will give better weed control and produce a finer seedbed.

Ideally plough in the autumn and avoid compaction. Sorghum requires a firm, fine tilth with moisture retaining qualities.

Do not sow too early, May / early June is ideal when soil temperatures are 14-15°C for three consecutive days. The seed is best drilled with an Airseeder or standard combi drill. Rolling after sowing will ensure a good seed to soil contact. Sow on 30 inches (same as maize) drill widths at a depth of 1.5-2 inches to gain the best overall results.

## Fertiliser

As with all crops it is necessary to have a soil with well-balanced fertiliser in order to achieve optimum growth and feed value. Adequate levels of nitrogen, in particular will ensure high protein, fast growth and quick recovery after cutting. As a general guide apply 100kg N/25kg P/ 25kg K per hectare into the seedbed. Farmyard manure and slurry can be applied prior to seedbed preparation. Do not apply excessive nitrogen as this may lead to lodging. It is also important to ensure that the pH does not fall below 6.00.

## Weed control

Weeds can be a major problem in this growth stage as they compete with the developing seedling for moisture nutrients and space. Spraying herbicides to control weeds before planting is one option and growers practicing zero or minimal till operations often use this method.

At planting, it is common to use a pre-emergence herbicide. To control annual grasses and broadleafed weeds we suggest you contact your local agronomist for the best advice about your crop.



## Diseases and pest control

Overall there are few pests or diseases of great concern, care should be taken to monitor for wireworms and leather jackets.

# SORGHUM



## Dwarf

- Ideal for driving and winter cover
- Can make excellent flushing points within maize
- Excellent replacement for kale
- Add warmth to maize crops when sown adjacent
- Weed control possible
- Not suitable for northern England or Scotland
- 12 kilo one acre units
- Crop Height 90-100cm
- Pack size – 12.5kg

## Why choose this product?

Low crop canopy, warmth and security makes B52 the ultimate driving crop.

**TOP SELLER**



## Intermediate

- Ideal replacement for maize
- Makes excellent controlled driving cover
- Fully tried and tested
- Herbicide use possible
- Best sown in June
- 10 kilo one acre units
- Crop Height 120-150cm
- Pack size – 12.5kg

## Why choose this product?

If rats and badgers are a problem Thunderbird 5 can provide a similar height to maize without the cob!



## Giant

- Tall, dense cover ideally used for a windbreak around maize
- Good vigour and fast growth
- Can reach a height of 7ft
- Later drilled crops will have reduced height potential
- Crops can screen guns allowing them to get in position without disturbing the birds
- 12 kilo one acre units
- Crop Height 200-220cm
- Pack size – 12.5kg

## Why choose this product?

Can be sown later than other Sorghums, just watch it grow!

# ESSENTIAL GUIDE TO KALE GROWING



## Soil type

Kale grows best on a medium loam soil with a pH of 6.0-7.0. It needs a well drained field which is free from pans or evidence of soil compaction. If grown on very light soils there is a risk that the crop could suffer from drought post drilling (which will jeopardise seed emergence).

## Seed bed preparation

A fine, firm moist level seedbed is required. The crop will benefit from applications of slurry or FYM and this should be ploughed in. The seedbed should be worked down with the intention of losing as little moisture as possible. Whenever possible create a stale seedbed.

## Sowing

Kale seed should be sown between mid April and mid July. Early sown crops which establish well are more likely to give the best cover.

## Fertiliser

The kale crop will grow extremely well when provided with plenty of organic matter. It is a fast growing crop and it needs plenty of nourishment. For a soil index of 2 apply 100 units/ha each of P and K to the seedbed. The amount of nitrogen required will depend on the previous cropping. Up to 170 units/ha may be needed after a run of cereals whereas the rate following a crop of intensively grazed grass can fall to 75 units/ha. The nitrogen application can be split for early sown

crops – 65% in the seedbed and the balance when the crop has reached a height of 15/16cm. For direct drilled crops it is normally considered wise to increase the nitrogen applied by up to 25% to boost the crop in the establishment phase. Consult your fertiliser supplier for an accurate assessment of your requirements, particularly if slurry or FYM have not been used.

## Herbicides

The control of broad leaved weeds is vitally important to establish a successful kale crop. We strongly advise that you consult your local agronomist to get the best advice about your crop.

## Pests & diseases

In dry years an attack by flea beetle can cause considerable damage to young established crops. Slugs can be a problem in direct drilled crops – slug pellets should be considered if this pest is likely to pose a threat. Rabbits and pigeons can also be a problem and control may be necessary in fields which are considered to be especially at risk. Clubroot represents the major disease threat – it is soil borne so control is by a good rotation of crops.

Avoid growing kale on any fields which have a history of clubroot, however Caledonian (clubroot resistant) has been used successfully. Alternaria and mildew can affect crops but attacks are seldom too serious.



## Caledonian Kale

- The first kale bred with club root tolerance
- Caledonian can be continuously sown on brassica sick sites
- A taller kale allowing for easier bird access
- Winter hardy
- Excellent germination and vigour potential
- Bred by JHI, Dundee
- Crop Height 90-100cm
- Pack size – 2kg

## Why choose this product?

Why take the risk of crop failure? Caledonian comes with club root tolerance.

**TOP  
SELLER**



### Goldeneye

- A club root tolerant variety
- Suitable for a wide range of uses
- Either as a straight or within a blend
- 5kg/ha 5kg pack

#### Why choose this product?

Club root tolerant variety.



### Coleor Kale

- Excellent Vigour
- Flexible sowing date
- Can perform into year 2 and often year 3
- Good selection for poorer, upland or exposed sites
- 5kg pack

#### Why choose this product?

A good selection for exposed sites.



### Keeper

- A shorter variety with excellent lodging resistance
- Excellent leaf cover with a bare floor
- High leaf to stem ratio
- British bred and fully tested for germination and vigour to ensure maximum establishment
- Winter hardy
- Crop Height 80-90cm
- Pack size – 2kg

#### Why choose this product?

A high leaf to stem ratio ensures maximum cover and protection for your birds.



### Interval (Rape/Kale hybrid)

- Fantastic fast growing rape with kale parentage
- Excellent establishment and early vigour
- Ideal replacement for kale when sown in June or July
- Winter hardy full season cover
- Can be used also as a pioneer or rescue crop
- Crop Height 50-100cm
- Pack size – 5kg

#### Why choose this product?

Crop failed or left it late? Interval is the ultimate fast growing cover provider.



### Kale Safe Blend

- A blend of Caledonian Kale and Interval rape/kale hybrid
- Fast growth and establishment
- A safer way to establish kale
- Different crop heights give a broken canopy for easier access
- Sow at 5 kilos per hectare
- Crop height 80-100cm
- Pack size – 2kg

#### Why select this product?

More vigorous and easier to grow than straight kale.

# MILLET



## Magic Millet Mixture

- Dense reed millet
- Ideal for use alongside maize
- Windproof and warming
- Good flushing point
- Also contains red and white millet for feed value
- Winter hardy
- Supplied in 10kg units
- Drill at 10kg/ha
- Our Number One Selling Millet
- Crop Height 100-120cm

## Why choose this product?

Will provide very dense cover with some feed value.

**TOP SELLER**



## White Millet

- This high yielding type will provide huge seed yields
- Ideal for use with maize crops
- Can be used as a feeding block or flushing point
- Supplied in 12.5kg. Drill at 25kg/ha
- Crop Height 80-100cm

## Why choose this product?

Huge seed yields will provide additional feed and prevent birds from roaming.

**WE CAN ALSO SUPPLY RED MILLET**



## GAME COVER SEED MIXTURES



### Kale/Quinoa Mix

- A taller kale allows for easier bird access
- Crop Height 100-120cm
- Seeds are highly sought by pheasants, partridge and farmland birds.

**Pack size 3.5kg. Drill at 7kg/ha**

### Why choose this product?

Sheds high protein seeds that will help reduce feed bills.



### Spaniel

- Summer sown drought tolerant cover mixture
- Can be broadcast into cereal stubble
- Can be used for patching areas where drought or flea beetle damage has occurred
- Fodder radish retains its seeds late into the season
- More winter hardy than Mustard
- Crop Height 80-100cm

### Mixture Formulation – 6kg pack. Drill at 12kg/ha

- Interval Rape/Kale
- Mustard
- Fodder Radish
- Carbon
- Buckwheat
- Skyfall

### Why choose this product?

Has your crop failed or established poorly? This fast growing recovery mixture can save the day!





### Labrador

- Two year full season cover and feed
- Ideal for use in cooler more exposed areas
- Triticale cereal helps resist rabbit damage
- Brood rearing potential
- Suitable for Countryside Stewardship
- Crop Height 100cm

### Why choose this product?

Labrador will tolerate difficult and low pH soil types, whilst providing quality.

### Mixture Formulation – 20kg pack. Drill at 50kg/ha

- Mustard
- Kale
- Spring Triticale
- Quinoa
- Linseed
- Spring Barley



### Partridge Habitat

- Brand new mixture
- High seed yield provides food source through the winter
- Interval rape/kale hybrid offers quick establishment and excellent cover through the whole winter

### Why choose this product?

Formulated specifically to offer feed and habitat for Grey Partridge.

### Mixture Formulation – 20kg pack. Drill at 40kg/ha

- Spring triticale
- Spring barley
- Linseed
- Sandoval Quinoa
- Mustard
- Interval Rape/Kale Hybrid



# CATCH CROPS



## Recovery 2

- Fast growing mixture for failed spring sown crops
- Can be planted up to the end of August
- Also useful for patching or overseeding

### Why choose this product?

Later sown rescue crop for failed areas.

### Mixture Formulation – Pack size 4.5kg. Drill at 11kg/ha

- Forage Rape
- Stubble Turnip
- Mustard
- Fodder radish



## Utopia (Kale x Mustard hybrid)

- Amazing cover produced in a short period of time
- Best sown in June or July
- From the same plant breeder as Utopia
- Excellent cover by November
- Frost tolerant
- Ideal for new sowings or patching existing areas
- Can be sown into cereal stubble
- Sow at 2 kilos per acre
- Crop Height 60-100cm

### Why choose this product?

Amazing cover in a short period of time.

### Pack size – 5kg / 1 ha unit



## OTHER USEFUL CROPS



### Reed Canary Grass

- Perennial cover
- Will grow on poor soils and exposed areas
- Second year growth can reach 2 metres
- Takes two years to become fully established
- Driving or nesting cover
- Crop Height First Year 50-60cm
- Crop Height Subsequent Years 150cm

**Pack size 3.5kg. Drill at 7kg/ha**

### Why choose this product?

Useful for difficult to cultivate areas.



### Oilseed Radish

- Quick growing versatile plant
- Seeds are used by wild birds late into winter
- Spring or autumn sown
- Ability to smother out weed competition
- Crop Height 60-80cm
- Can be used for biomass green manure

**Pack size 25kg. Drill at 15kg/ha**

### Why choose this product?

Good winter seed holding capabilities.



### Phacelia

- Extremely fast growing catch crop
- Brilliant pretty blue flowers attract huge number of insects
- Pollen and nectar provider
- Competes well with weeds
- Care should be taken in following crops as phacelia can reseed itself readily
- Crop Height 30-60cm

**Pack size 10kg. Drill at 10kg/ha**

### Why choose this product?

Excellent pollen source for bees.



### Sandoval Quinoa

- Capable of shedding up to 1 tonne of seed per acre
- Sheds high protein seed which will help reduce feed bills
- Seeds are highly sought by pheasants, partridges and farmland birds
- Ideal for use with companion crops such as Keeper kale or Interval Rape/Kale hybrid
- Crop Height 80-150cm

**Pack size 5kg. Drill at 10kg/ha**

#### Why choose this product?

Free source of high protein feed.



### Mustard

- Fast establishment and drought tolerant cover
- Ideal summer sown catch crop
- Broadcast or drill into cereal stubble
- Resilient to rabbit damage because of its rapid establishment
- Crop Height 30-100cm

**Pack size 10 & 25kg. Drill at 12kg/ha**

#### Why choose this product?

Easy way to thicken up a poorly established drive.



### Chicory

- Perennial chicory
- Spring sown
- Excellent driving cover in second year
- Deep rooted
- Drought tolerant
- Best mixed with other species in first year
- Crop Height 150-200cm (second year)

**Pack size 3kg. Drill at 7.5kg/ha**

#### Why choose this product?

Excellent perennial cover, easy to establish.



### Sunflower

- Attractive flower/seed head production
- Excellent standing ability with thick stems
- Best sown within mixtures
- Excellent use by wild birds

**Pack size 12.5kg. Drill at 25kg/ha**

#### Why choose this product?

Adds a splash of colour to your drives.

# SOWING & COVER GUIDE

Use	Product	Pack Size	Sowing Date	Cover Date	Crop Duration (years)
Winter Holding	Traditional	1 acre	April-May	July-Feb	2
Winter Holding	Labrador	1 acre	April-May	July-Feb	2
Driving Cover	Partridge Mix	1 acre	April-May	Sept-Feb	1
Driving Cover	Cocker	1 acre	April-May	Sept-Feb	1
Driving Cover	Maize	1 acre	April-May	Sept-Feb	1
Driving Cover	Sorghum	1 acre	May-June	July-Feb	1
Driving Cover	Kale	1 kilo	April-June	Sept-March	2
Winter Holding	Quinoa	2 kilos	April-May	Sept-Dec	1
Winter Holding	Kale/Quinoa Mix	1 acre	April-May	Sept-Feb	2
Winter Holding	Sunflower	10 kilos	April-May	July-Nov	1
Winter Holding	Buckwheat	10 kilos & 25 kilos	April-May	June-Sept	1
Winter Holding	Triticale	25 kilos	March-April	Sept-Dec	1
Driving Cover	Reed Canary Grass	2.5 kilos	April-May	Sept-Feb	4
Driving Cover	Chicory	2.5 kilos	May-June	Sept-Feb	3
Catch Crops					
Winter Holding	Recovery	1 acre	June-Aug	Sept-Feb	1
Winter Holding	Mustard	10 kilos & 25 kilos	May-Sept	Aug-Dec	1
Winter Holding	Phacelia	5 kilos	April-June	Sept-Nov	1
Winter Holding	Interval	5 kilos	April-July	Sept-Feb	1
Environmental Products					
Buffer	Species Rich Grass Mix	20 kilos	April-Sept	-	5
Wild Bird Seed Mix	1YR WBSM	1 acre	April-May	-	1
Wild Bird Seed Mix	2YR WBSM	1 acre	April-May	-	2
Wild Bird Seed Mix	Bumblebird Mixture	1 acre	Aug-Sept 7th	-	2
Buffer	Beetlebank	5 kilos	April-Sept	-	5

# GREEN COVER CROPPING

**The use of cover cropping is now becoming commonplace on many farms who are looking to improve soil health, cut cultivation costs and improve yields. There is a very wide range of cover crops that can be used all with varying timescales and agronomy. We see it as vitally important to choose cover crops carefully with consideration to the existing rotation, the following crop and what you particularly want the cover crop to do for you.**

We have seen with many farms that have over the last 10 years started to integrate soil improvement plans a consistent yield benefit from following crops, a reduction in fixed and variable costs and marked improvement in soil health and environmental benefits. Cover crops are not an overnight solution but many benefits are seen after the very 1st Cover crop.

Some of the key considerations in choosing cover crops are:

## **Stewardship options**

The legislation and stewardship schemes are evolving with increasing emphasis on protecting soil and water. With careful planning the greening and stewardship options can be integrated into most farms with financial and environmental benefits. Do study the rules and consult with ourselves to ensure you make the most of the activity.

## **Improving soil structure, drainage and soil health**

For many this is a primary goal and is all linked to the cover crops rooting and biomass production. Radish crops for example can produce rapid soil improvement from the



action of deep roots and many shallow fibrous roots. Within months earthworm numbers rise, the soil tilth is improved, the soil drains better and aerated soil allows the next cash crop to establish faster and yield more.

## **Yield improvements**

In the last 12 months we have been involved in several trials that show consistently improved yields in following spring crops, particularly in peas, beans, potatoes, sugar beet and maize. Cereal yields are improved but often may take longer to be shown. Where soil pests and diseases are reduced by cover crops the yields can be very marked.

### **Reduction in soil pests and diseases**

Careful choice of the species and varieties in a cover crop can very effectively reduce many nematode pests. We have seen great success with reducing these nematodes – Potato cyst, Beet cyst, many Free-living nematodes such as Stubby root types and Root knot types. We believe many low yields in cereals and rape are due to Free-living nematodes and a reduction must be linked to careful identification of the problems first.

### **Grazing opportunities**

In lowland England cover crops can offer great grazing opportunity. The crop can still have many other benefits as they can meet Stewardship requirements and can still reduce nematodes etc.

### **Reduced cultivation costs**

After a cover crop, the cultivation costs will reduce allowing further margin opportunities in establishing a spring crop. Many growers are establishing maize, beet and legumes with min till or direct drilling and £70 - £100 per hectare reduction in cultivation costs can be achieved.

### **Reducing Nitrogen loss from bare soils**

Most cereal crops do leave behind a high level of Nitrogen in the soil. If soil is left bare over the winter most of the Nitrogen will leach out and cause high N levels in water courses and significant financial loss. Nitrogen has been paid for, so why let it leach from your soils. We typically see many soils in eastern England lose over 70 kilos N per ha over a autumn/winter.



**Successful cover crops do need planning and the correct agronomy. GFP has a wide experience in house of cover crop selection and we can share with customers our trials and experience. Choosing the wrong cover crop species can lose the benefits and sometimes make soils worse.**

Our seeds are carefully selected from reliable sources and we test to ensure high performance. We make mixtures in house and can tailor make mixtures to suit specific farm need.

### **Oil radish**

Oil radish has rapid growth and is excellent at catching nitrogen. It produces high levels of organic matter and its strong, deep roots bust through compaction to improve soil structure.

It is a brassica but it is very resistant to clubroot, making it valuable in a rape rotation and is approved now for use in Ecological Focus Areas in BPS greening. Our varieties include standard oil radish, nematode resistant oil radish and tillage radish. We have a wide range to choose from and particularly encourage growers to look at the late flowering varieties as they do not flower from August or September sowing they are much more effective.

These also offer good grazing with high palatability.

### **Mustard**

An economical option with rapid growth and high biomass, mustard has a short growing season and is suitable for late drilling. It is an efficient nitrogen catcher but not winter hardy. Careful variety selection can provide bio fumigant properties but mustard can exacerbate clubroot and some nematode issues, so be sure to take expert advice. We have varieties that include basic white mustard, nitrogen catch with nematode resistant, brown mustard and Ethiopian mustard.



### **Biofumigation crops**

We see this technique gaining a lot of interest as we lose chemical actives. Biofumigation needs crops that mulch easily and have a high Glucosinolate content that rapidly breaks down to produce bio fumigant gas – Isothiocyanate.

Working closely with specialist breeders, Belmont can offer mixtures of mustards and radish which are formulated to give high bio fumigant gas production, coupled with key advice about the machinery needed to make the technique work.

### **Vetch**

Vetch is a large seeded legume which fixes large volumes of atmospheric nitrogen. Vetch can provide winter hardiness, deep roots and fast growth. Vetch is also a common partner in mixtures. It is becoming more popular but care is needed in some root crop rotations and with beans.

### **Clover**

Clovers have a wide range of growth characteristics and levels of productivity, but all of our varieties are effective at fixing atmospheric nitrogen. Options include the fast growing annual types such as Berseem clover and Crimson clover or the perennial Red clover.

### **Cereals**

Cereals are easy to establish with high biomass production and good nutrient catching ability.

Depending on variety selection, other benefits include fast growth, free living nematode reduction and frost kill. Our cereal options include Forage rye, Strigosa oats and common oats. Mixed with Radish Oats can be a very effective soil conditioner due to varying root depths.



## Grass

Belmont offers a number of grass based options designed to provide green cover benefits. These can range from short term Westerwolds to a three year Black-grass Buster mix based on a blend of Festulolium and perennial rye grass.

## Other species

Other species with benefits in a green cover situation include Winter linseed, Sunflowers, Lupins, Gold of Pleasure, Phacelia, Sticky nightshade and Buckwheat. These crops can provide nitrogen catching, soil health improvement, fast growth, good rooting and nematode reduction;- take expert advice to select the best crop for your specific needs.

## Mixtures

Mixtures can provide multiple benefits and often combine a deep rooting crop to retain fertility with a legume crop to trap atmospheric nitrogen. With careful selection, mixtures can provide increased organic matter and soil biodiversity, a rich improvement in soil humus, improved soil structure and a reduction in soil pests and diseases. The Belmont range of standard mixtures suits most situations.

Options include a Soil Structure Mix, which adds large volumes of organic matter and has deep rooting species to improve soil structure and reduce the effects of compaction. A Soil Vitality Mix that is designed to enhance the whole soil biota. A Vetch and Forage Rye Mix is both excellent at catching and fixing nitrogen, while our Soil Biofumigation Mix produces a highly potent fumigation gas.

Mixtures involving 3 or more species are popular and sensible. However the proportions in a mix are critical to take account of seed size and growth characters. We can formulate tailor made mixtures to be effective and suit individual farm needs.

Do please discuss your needs with us to determine which is the most appropriate mixture for your farm's needs.

## Custom mixtures

Belmont can provide advice and guidance on creating specific mixtures to suit your specific soil types and cropping rotation situations. We can offer many different bag sizes.

---

**There is much interest in how soil fungi and bacteria work to create healthy soils. We know that some farming practices can reduce the soil biota activity. How might we add more soil organisms to improve this situation?**

At Belmont we know some cover crops can help the position, but we think that by inoculating cover crop seed with appropriate fresh soil organisms we might be able to “reset” soil microbiology. We have trials on mixtures inoculated with specific soil fungi and bacteria planted in August. We are working with a specialist Bio company and are looking particularly at plant growth promoting rhizobacteria (PGPR) and mycorrhizal fungi, which benefit plants through enhancing nitrogen, phosphorous and water uptake.

We have had a number of controlled trials at various locations, to evaluate the effects and findings of leading soil scientists such as Professor Jonathan Leake, Department of Plant and Animal Sciences, University of Sheffield. Our initial observations using various cover crops have been encouraging and we will continue to further evaluate the effects of direct drilling spring cereals on the same plots.

Professor Leake offers comments on the interaction of soil biota with arable crops. “Cover crops, through the growth of their roots and root exudates, can help support more active populations of soil microorganisms, which are beneficial to crops and improve soil health.”

Many cover crops form symbiotic associations with mycorrhizal soil fungi. These fungi grow into the roots of the plants and extend into the soil to take up nutrients, especially phosphorus and at the same time improve soil aggregation. Mycorrhizal fungi can have additional benefits for the plants by inducing increased resistance to pathogens and also can stimulate populations of plant growth, promoting soil rhizobacteria. In legume cover crops such as vetch and clovers, beneficial interactions occur between bacterial and fungal partners inside their roots, with both nitrogen fixing bacteria in nodules and mycorrhizas.

Not all cover crops or main crops form mycorrhizas and some of the brassicas such as oil radish, if grown as monocultures, may be suppressive of mycorrhiza in a following crop.

However, studies of cover crop mixtures in which oil radish is accompanied by mycorrhiza-forming species such as cereals and legumes, have found mycorrhiza can be increased in a spring sown cereal crop compared to when preceded by winter following. The methods used in the establishment of spring crops after winter cover crops can affect the extent to which the benefits of helpful soil microorganisms are passed on to the main crop. Intensive soil cultivation with inversion ploughing and harrowing, destroys a high proportion of mycorrhizal structures whereas less intensive tillage methods such as shallow disking and especially direct drilling result in higher mycorrhiza.

The plant species that in general are good at encouraging soil fungi and bacteria are:-

Cereal	Particularly Oats
Legumes	Vetch , Clovers and Lupins
Plus	Linseed, Sunflowers and Quinoa

## SW6/SAM 2/CSAM 2 Multi-species Winter Cover Crop

This is available for mid and higher tiers with a payment of £129 per Ha.

Establish a quick growing cover crop by 15 September that will provide a dense cover and protect the land from soil erosion and runoff. The cover crop can be destroyed in late January or early February, a maximum of 6 weeks before establishing the following spring crop. When weather conditions delay establishment of a spring crop, the cover crop can be left until mid-March.

This option should be used on vulnerable soil types, particularly light sandy soils with nitrate vulnerable areas.

The choice of cover crop can be a mix or a single crop. Crops should be suitable for winter sowing, fast growing (to mop up N) and be frost tolerant to provide adequate cover over winter.

A mixture of seeds, such as rye, vetch, phacelia, barley or mustard, can be sown, or other crops such as ryegrass or tillage radish, but the choice of cover crop will depend on herbicide selected and the rates of application from the previous crop. The choice of cover crop will also depend on the crops grown in the rotation.

To manage the crop, remove any soil compaction but do not subsoil on archaeological features. The crop must be established by the 15 September, so it can take up soil nitrate before winter drainage water leaches it below the depth of developing plant. These crops can either be drilled or broadcast with a suitable seed rate to provide a dense cover to protect the soil from erosion. The crop can be destroyed in late January or early February, before the crop gets to well developed – if left too late nitrate leaching may increase the following winter. The destruction of the crop may include an application of glyphosate prior to cultivation of the following crop.



# GFP WHARTONS COVER

## CROP MIXTURE



Boost your soil performance with the GFP Whartons Cover Crop Mixture, a carefully balanced 6 species blend designed to enhance soil structure, build biomass, and drive nitrogen fixation. Formulated for strong autumn establishment, this mixture delivers reliable results across a wide range of soils and rotations.

### Why Choose the GFP Whartons Cover Crop Mix?

- **Enhances soil biology** with multiple species supporting fungi, bacteria, and mycorrhizal development.
- **Improves soil structure** through deep rooting radish and vigorous root biomass from all components.
- **Delivers high autumn vigour**, ensuring quick ground cover and excellent biomass production.
- **Fixes nitrogen naturally**, reducing reliance on artificial inputs.
- **Provides excellent weed suppression**, particularly from hybrid forage rape and vetch.

### What's in the Mix?

**Phacelia** – Strong autumn vigour and high biomass; excellent soil conditioner.

**Vetch** – The best autumn nitrogen fixer; highly beneficial for soil fungi and bacteria.

**Linseed** – Supports root fungi and boosts mycorrhiza.

**Crimson Clover** – Fast-growing, efficient nitrogen fixer.

**Radish** – Deep roots for breaking compaction and structuring the soil.

**Hybrid Forage Rape** – Scavenges residual nitrogen and suppresses weeds effectively.

### Application & Pack Information

- **Sowing rate: 12 kg/ha**
- **Seed count: Approx. 194 seeds/m<sup>2</sup>**
- **Available pack sizes: 25kg or 500kg**

### Core Benefits to Your Farm

1. Increased species diversity
2. Better soil tilth
3. Improved soil structure
4. Higher root biomass
5. Stronger overall soil health
6. Natural nitrogen fixation



## GFP WHARTONS COVER CROP

Species	Comments	% in Mix	Kilos in Mix	Seeds per sq.m
<b>Phacelia</b>	Small seeds, strong autumn vigour, high biomass, good soil conditioner	4	0.5	28
<b>Vetch</b>	Best N fixer in autumn, great for soil Fungi, and bacteria	33	4	8
<b>Linseed</b>	Good for root fungus, Mycorrhiza	17	2	28
<b>Crimson Clover</b>	Good N fixer, fast growth	12	1.5	63
<b>Radish</b>	Deep roots, great soil structuring	17	2	17
<b>Forage Rape (Hybrid)</b>	Scavenge soil N, reduce surface compaction, good weed suppressant	17	2	50
		<b>100%</b>	<b>12 kilos per ha sowing</b>	<b>Seed per sq.m = 194</b>

Speak to the  
GFP Team for  
Companion  
Crop Options

## GREEN COVER CROP

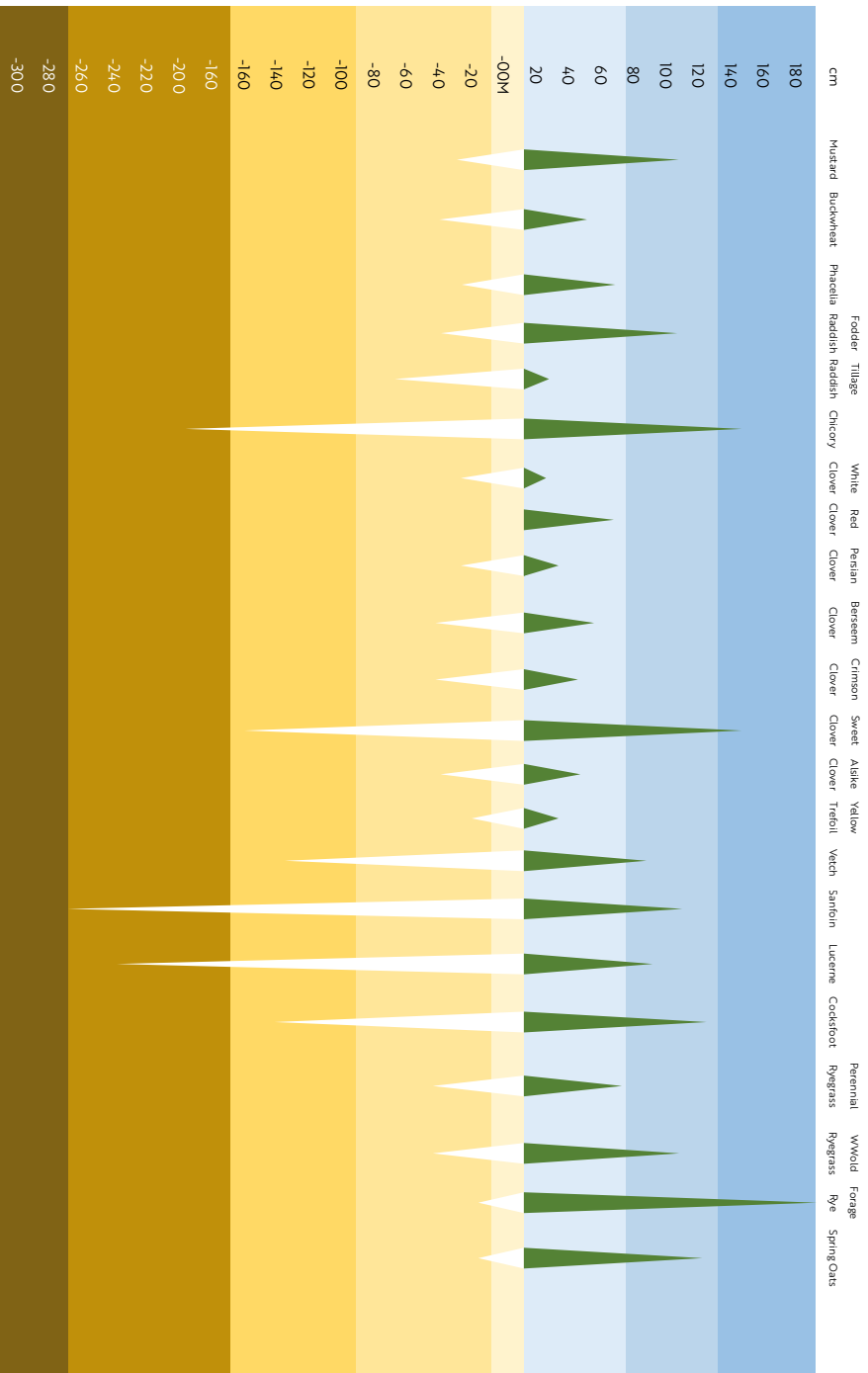
Mixture	SAM2	Grazing		Pack Size (kg)	Typical Sow (kg/ha)*
Vetch Rye Cover	✓	✓	★ Well proven-Ideal before Maize or Beet. Vetch & Rye	25/500	40
Soil Vitality Mix	✓	✓	★ Ideal for soil vitality and health. Good for grazing pre- Christmas if sown early enough. Radish, Winter Oats, Black Oats, Phacelia, Berseem Clover & Vetch	25/500	20-25
Soil Structure Mix	✓	✓	★ A great soil structure creator Radish, Winter Oats, Rye, Phacelia & Tillage Radish	25/500	25/30
Basic Soil Improver	✓	✓	Economy soil health improver – This mix was Basic Mix 2, with a slightly different composition. Winter Oats, Vetch & Phacelia	20	18-20
Radish, Vetch & Phacelia	✓	✓	★ Radish, Vetch, Phacelia	25/500	22/25
Late Flowering Power Mix	✓	✓	This mixture contains a late flowering radish, so suitable for earlier drilling windows. Late flowering Radish & Winter Oats	25/500	20-25
Basic Power Mix	✓	✓	New and Improved version of Traditional Power Mix and includes crimson clover for nitrogen fixing. Contains an early flowering radish for late drilling, Radish, Winter Oats & crimson clover	25	25
Nematode Reducer	✓	✓	Angus Oil Radish, Siletta Nova Oil Radish & Defender Oil Radish	18/500	18
Super 10 Mix	✓		A mix of Crimson Clover, Winter Oats, Radish, Berseem Clover, Vetch, Phacelia, Buckwheat, Sunflowers, Gold of Plesure & Rye	25/500	25-30
Black Oats & Phacelia Mix	✓		Suitable for use before peas or beans. Contains: black oats, phacelia and red clover. Now includes a nematode resistant black oat variety.	16	16
Summer Mix	✓	✓	Oil Radish, Crimson Clover, Berseem Clover, Phacelia	10	10
Short Summer Mix	**		★ This mix is similar to KSUMMERA Summer Sown Catch Crop A – Buckwheat, Phacelia, Linseed, Crimson Clover, Berseem Clover & Radish	16/500	16
Summer Legume Mix	**		★ This mix can be topped mix season to extend its longevity. Buckwheat, Crimson Clover, Linseed, Red Clover, Serradella & Phacelia	12/500	12
Forage Rye & Radish Mix	✓	✓	For those that don't want oats in their green cover mixture and a great option for sowing post maize. Radish & Forage Rye	25/500	25
Radish & Phacelia Mix	✓		Radish & Phacelia	12.5	12.5
Cereal Free Cover Crop	✓		Vetch, Buckwheat, Linseed, Phacelia, Crimson Clover & Baracuda Oil Radish	16/500	16
Post Maize Grazer	✓	✓	SFI compliant & suitable for grazing. It can be sown early or late as it won't flower. Forage Rye, Turnip Rape & Radish	25/500	30
Post Harvest Grazing Mix	✓	✓	Forage Rape, Kale Rape, Tillage Radish, Berseem Clover & Stubble Turnips with Turnip Rape. Great for nutrient capture and soil structure improvement	20/500	6-10
BioFum Summer Mix	✓		Contains: Carbon, BCN white mustard and BCN oil radish	20	20
Living Mulch Blend	✓	✓	Great for under sowing cereal crops: ask for advice. Yellow Trefoil, White Clover, Subterranean Clover & Small Leaved White Clover	5/25	5

★ = Key Choice Mixes

\*Sowing rate is dependent on soil type, soil conditions, soil temperature, and time of sowing

\*\* These mixes contain species that meet the requirements for SAM2, but they may not meet the aims of the action

## Cover Crop Species Selection Above Ground Plant Matter and Below Ground Root Profile



# WILD FLOWER MANAGEMENT GUIDELINES

Select a weed-free site of low fertility.

Fertiliser should not be used, since broad-leaved and grass weeds, together with cultivated grasses contained in standard mixtures, can be highly competitive on fertile soils. This can adversely affect seed germination, establishment and subsequent growth.

However, increased grass cutting can help to counteract over-competitive growth. Control weeds before sowing. Annual weeds may be hoed, buried or killed with a contact herbicide. Perennial weeds should be eradicated by a translocated glyphosate-based herbicide.

Sow mixtures either from early March to early May, or from early August to mid-September. This will ensure optimum establishment of most species.

Cultivate the ground to provide a fine, weed-free seed bed. Firm if necessary.

Take care to sow evenly, at the recommended rate. Thoroughly mixing one part seed with four parts sand dries and makes it more easily distributed.

Rake the seed in lightly with a spring-tined rake and firm the soil by treading or, preferably, rolling. This ensures that the seed comes into contact with moisture in the soil.

Water with a fine spray. This will avoid disturbing the surface of the soil. Keep the area well-watered and free from any unwanted plants.

Cut the sward every six to eight weeks during the first year after sowing and remove the cuttings. This will prevent the grass from overgrowing the slower growing wild flowers.

In the following years, cut in early spring before growth starts, and in October, after all wild flower seeds have been shed.

Remove the cuttings.



## WILD FLOWER SOWING GUIDE



● Sowing possible ● Optimum sowing window

## Mixture Composition

We have carefully formulated our wild flower mixtures to meet a number of different habitats and soil types. This can range from a sandy soil to a hedgerow habitat. Low maintenance grass species (see panel below) are included in the mixture to act as a nurse crop in the early years of establishment and growth. The grasses help suppress weed invasion, whilst allowing the wild flowers to flourish. All our AWF mixtures contain 20% native British produced wild flowers and 80% grasses (see below for details).

## 80% Grasses

- Browntop Bent** *Agrostis capillaris*
- Chewings Fescue** *Festuca rubra commutata*
- Crested Dogtail** *Cynosurus cristatus*
- Sheeps Fescue** *Festuca ovina*
- Slender Creeping Red**  
*Festuca Festuca rubra litoralis*
- Smooth Stalked Meadow Grass** *Poa Pratensis Strong*
- Creeping Red Fescue** *Festuca rubra rubra*

All our AWF Wild Flower Mixtures contain 80% grasses and 20% native British produced wild flowers Brown top



## CROP SOLUTIONS



Sometimes game cover crops are difficult to get established, whether it's caused by animals eating the crop or just problem areas.

To help you solve some of the more common problems we have created a crop solutions chart.

Problem	Crop Solution
Animal Damage	
What do I do if rats and badgers are a problem?	Late Maize Intermediate Sorghum
Rabbits eat and damage my crop	Spring Triticale
Deer are a problem in my maize crop	Intermediate Sorghum
Difficult Sites	
My land is on thin soils with low pH	Labrador Spring Triticale Recovery Mix
I can only sow in Autumn	Recovery Mix
I need a permanent solution	Chicory Reed Canary Grass
What can I establish in a woodland area?	Buckwheat
Establishment Problems	
I have problems establishing Kale	Kale safe blend
I need to control weeds with a herbicide	Cocker Mixture Jack Russell Belmont 1 & 2 yr WBSM
My crop has failed what can I sow?	Recovery Mix





BELMONT  
SEEDS

PART OF GFP AGRICULTURE LTD

GRASS LEY MIXTURES



# NEW GRASS SEED MIXTURES FROM BELMONT SEEDS

- ✓ The varieties used are bred with British farmers in mind
- ✓ All grass varieties recommended on NIAB 2023/24 list
- ✓ All our mixtures are designed and formulated to ensure continuous improvement for British farming
- ✓ Our grass varieties are tried, tested and proven with British farmers



### MIXTURE TABLE KEY:

<b>EPRG</b>	Early Perennial Ryegrass				
<b>IPRG</b>	Intermediate Perennial Ryegrass				
<b>LPRG</b>	Late Perennial Ryegrass				
<b>RC</b>	Red Clover	<b>Dip</b>	Diploid	<b>Tet</b>	Tetraploid



## TOP CUT

### For high yields of quality silage

- At least two bulky cuts of silage a year, for up to three years
- Potential for excellent autumn grazing
- Blend of diploids and tetraploids for yield and forage quality
- High tetraploid content to maximise sugars

#### MIXTURE DETAILS:

MIXTURE DETAILS:			HEADING DATE:
4kg	Sikem	Italian Dip	21 <sup>st</sup> May
3kg	Montblanc	Italian Tet	18 <sup>th</sup> May
3kg	Enduro	Hybrid Tet	20 <sup>th</sup> May
3kg	Moira	IPRG Dip	24 <sup>th</sup> May
<b>13kg/acre</b>			



## TOP CUT CLOVER

### A high protein ley which can be cut several times a season

- Produces high energy and high protein silage
- Red Clover will fix valuable nitrogen
- Potential for aftermath grazing
- RED ADMIRAL red clover blend delivers consistently high yields for the duration of the ley

#### MIXTURE DETAILS:

MIXTURE DETAILS:			HEADING DATE:
3kg	Sikem	Italian Dip	21 <sup>st</sup> May
2kg	Montblanc	Italian Tet	18 <sup>th</sup> May
2.5kg	Enduro	Hybrid Tet	20 <sup>th</sup> May
3kg	Moira	IPRG Dip	24 <sup>th</sup> May
2kg	Red Admiral	RC Blend	
<b>12.5kg/acre</b>			



### Benefits of Red Clover

Red Clover offers several benefits when grown within a grass ley. Most importantly, is its ability to fix atmospheric nitrogen of up to 150kg N per ha (120 units per acre) annually. As well as this, Red Clover can also increase the protein content of silage by up to 20%, and therefore higher milk yields and liveweight gains can be achieved, when compared to 'grass only' silage. Red Clover leys are also an ideal gateway into organic farming systems, by fixing nitrogen in the subsequent crop and improving soil structures.



## FLEXISWARD

**A flexible mixture that will work how you want it to**

- 3-4 year mixture for silage and grazing
- The most productive and versatile ley on the farm
- Provides a choice of management systems

**MIXTURE DETAILS**

MIXTURE DETAILS			HEADING DATE:
2kg	Melprimo	Italian Tet	23rd May
2.5kg	Hymr	Hybrid Tet	22nd May
2kg	Enduro	Hybrid Tet	24th May
2kg	Alecto	IPRG Dip	24th May
2.5kg	Astonvision	IPRG Tet	26th May
2kg	Drumbo	LPRG Dip	4th June
<b>13kg/acre</b>			

## FLEXISWARD CLOVER

**Flexisward, with extra punch!**

- Added benefits of Red and White Clover for improved animal performance
- 3-4 year mixture for silage and grazing
- The most productive and versatile ley on the farm
- Provides a choice of management systems

**MIXTURE DETAILS**

MIXTURE DETAILS			HEADING DATE:
2kg	Melprimo	Italian Tet	23rd May
2kg	Hymr	Hybrid Tet	22nd May
2kg	Enduro	Hybrid Tet	24th May
2kg	Alecto	IPRG Dip	27th May
2kg	Astonvision	IPRG Tet	26th May
2kg	Drumbo	LPRG Dip	4th June
0.5kg	Ganymed	RC	
0.5kg	Violin	WC	
<b>13kg/acre</b>			



## SMITHFIELD

NOW AVAILABLE  
NO CLOVER

### A medium term cut and graze mixture

- 4-5 year, all ryegrass ley, with white clover
- Designed for high performance grazing
- Will provide one big silage cut, if required

#### MIXTURE DETAILS

3kg	Alecto	IPRG Dip
3kg	Pensel	IPRG Dip
3kg	Drumbo	LPRG Dip
4.5kg	Weldone	LPRG Tet
0.5kg	Violin	White Clover

13kg/acre



## GREENSWARD

NOW AVAILABLE  
NO CLOVER

### Long term grazing mixture with an early bite

- Continuity of production from early spring to late autumn
- High sugar tetraploids encourage stock to eat more, leading to higher liveweight gain or more milk
- High quality white clover blend provides minerals and trace elements vital to your livestock's diet

#### MIXTURE DETAILS

1.5kg	Glasker	EPRG Dip
2.5kg	Alecto	IPRG Dip
2.5kg	Moira	IPRG Dip
2kg	Astonvision	IPRG Tet
2.5kg	Drumbo	LPRG Dip
1kg	Comtal	Timothy
0.25kg	Coolfin	RC
0.25kg	Merwi	WC
0.5kg	Violin	White Clover

13kg/acre



## SOLAR PARK MIXTURE

### For new and existing areas

- A robust mix that works for the creation of a new site or improvement of an existing one.
- 20kg pack

#### MIXTURE DETAILS

Creeping Red Fescue
Chewings Fescue
Hard Fescue
Smooth Stalked Meadow Grass
Sainfoin
Vetch
Red Clover
Alsike Clover
Plantain
Birdsfoot Trefoil
Common Knapweed
Ox-eye Daisy
Sheeps Burnet
Yarrow
<b>15kg/acre</b>



## HORSE Paddock

### Horse and pony paddock mixture

- The inclusion of creeping red fescue aids the rapid repair of damaged swards
- The dense mat produced, reduces poaching and aids hoof protection from stones
- Horse Paddock Mixture will tolerate several years of wear and tear

#### MIXTURE DETAILS:

<b>4.7kg</b>	EPRG Dip
<b>4kg</b>	IPRG Dip
<b>3kg</b>	LPRG Dip
<b>1kg</b>	Strong Creeping Red Fescue
<b>2.5kg</b>	Timothy
<b>13kg/acre</b>	



## Intensive Grazing

- A mixture specially formulated to maximise voluntary intakes and increase animal production from grazed grass
- Highly palatable and highly digestible tetraploid grasses increase the rate of digestion, leading to improved voluntary intakes
- Outstanding energy content means more milk and meat from every bite
- High sugars and digestible fibre improve digestion efficiency
- Includes LG Animal Nutrition White Clover Blend to increase palatability, mineral and protein content



## MIXTURE DETAILS

### Late Perennial Ryegrass (Tet)

- Meiduno
- Weldone
- Aspect
- Xenon

### White Clover

LGAN White Clover Blend

**Pack Size:** 13kg (1 acre)



Intensive Grazing mixture exhibits impressive yields, high sugar and high levels of digestible fibre in trial. This resulted in 10% higher energy yield than the control mix, equivalent to an additional 2,553 litres of milk, worth £638/ha at 25 pence per litre. Alternatively, over a tonne less concentrate needs to be bought in for every hectare grown.



MIXTURE PERFORMANCE:	INTENSIVE GRAZING (Grazing Management)
Dry Matter Yield (t/ha)	11.3
Sugar Contact (% WSC)	20.2
Digestible Fibre (% DNDF)	85.1
D-Value	85
Protein Content (%)	15.3
Energy Content (% ME)	13.6
Energy Yield (MJ/ha)	154,806

### ENSIGNPLUS WHITE CLOVER BLEND

#### A blend of white clovers

- Gives better animal performance, higher milk yields and better live weight gains. It also produces a better quality sward, with fewer weeds and less disease
- It has an exceptionally long growing season and 'fixes' free nitrogen from the atmosphere for maximum production
- By using a blend of different varieties there are always at least two that are best suited to whatever the management being applied to the sward
- Animals prefer to graze a clover/ grass sward - this results in higher voluntary intakes and better animal performance

### RED ADMIRAL RED CLOVER BLEND

#### A blend of red clovers

- Balances production through the growing season, while maintaining excellent persistency and disease resistance. Red clover swards managed correctly can meet the forage requirements of many farms and significantly improve protein contents and overall feed value of winter forage
- It's better suited to silage production than white clover because of a more erect growth habit and its significantly higher forage yields. Red clover silage has a high crude protein content of 16% to 20% and a ME content of 10 to 12MJ/kg DM.

## CLOVER PLUS

### Pelleted White Clover Blend

Overseeding clover into an existing ley has become a very popular method of improving productivity. CloverPlus is the perfect product for the job. CloverPlus is a white clover blend, coated in a pellet and treated with **HEADSTART® GOLD**.

#### This unique product offers several significant benefits:

- The pellet increases the weight and size of the seed, making equipment calibration easier and giving a more consistent spread pattern if broadcast.
- The added weight ensures greater numbers of seed get down through the existing sward to give maximum soil/seed contact.
- In dry conditions, the pellet will protect the seed until there is sufficient moisture for germination.
- **HEADSTART® GOLD** seed treatment speeds up germination, giving young plants the best opportunity to compete with the existing sward.

## SOWING INFORMATION

### Sowing period

- Late March to late April

### Direct drill

- 100,000 seeds/ha
- 50,000 seeds/acre

Seed sold in one acre packs (50,000 seed units)

## YIELD & FEED QUALITY

### Average dry matter yield

- 15-18 tonnes/ha

### Average fresh yield

- 80-100 tonnes/ha

### Dry matter

- 15-24%

### Crude protein

- 12-13% [mainly leaves]

### Digestibility value

- 78%

### Metabolisable energy

- 12.5-13 MJ/kg DM

### Growing Costs

- £1460 per hectare

### Fresh weight

- £16 per tonne

### Dry matter

- £115 per tonne



### Fosyma

A new variety which has performed outstandingly in trials. Fosyma has unique, clean, pink roots, with a slightly higher DM content % which enables crops to be harvested later. Fosyma is one of the new generation of fodder beets, bred for maximum feed potential from every hectare. Rhizomania tolerance completes its package for outstanding performance.



### Brick

A new high yielding variety, ideal for growers looking to produce a high quality feed with a higher DM content %. Brick is a true fodder beet and therefore exhibits cleaner roots but will still deliver very high dry matter yields for maximum feed potential.

Rhizomania tolerant.



### Robbos

Robbos is UK proven. It produces high dry matter yields with clean yellow roots and medium dry matter content. It is an ideal choice for both dairy and beef production.



### Blaze

Blaze has the potential to produce excellent dry matter yields with very clean, bright red roots. Blaze is a medium dry matter variety which enables the roots to be fed whole or chopped. Low dirt contamination ensures high intakes with no scouring.



### Forage Rape

A fast growing catch crop with a high protein content. Very winter hardy and great for finishing lambs. Can be used for sheep, dairy or beef production.



### Stubble Turnips

Great summer buffer crop for dairy cows and finishing lambs. Economical to grow and will help to reduce winter feed costs.



### Kale

Ideal for buffer feed for dairy cows during dry summers or outwintering systems. Kale has a flexible utilisation period with excellent crude protein content and high forage yields.



### Forage Rye

Flexible sowing options after maize or cereals. Helps mop up residual nitrogen and prevents soil erosion. Ideal for early spring turnout.



### Swede

Excellent high energy winter feed with low production costs. Great for finishing lambs with high dry matter yields.



### Maize

Low production cost, with a high DM value. Higher profits and consistent forage quality.



## Why grow Lucerne?

- High protein forage
- Four cuts per year possible
- Suitable for silage, big bales or zero grazing
- Fixes atmospheric nitrogen.
- Drought tolerant
- 3-5 year potential



## ESTATE

- High wear areas
- Re-seeding
- General landscaping
- Quick establishment

An economical landscape ryegrass mixture that establishes quickly, giving rapid cover and good wear tolerance. Estate contains only true amenity cultivars.

### MIXTURE FORMULATION

- 55%** Perennial Ryegrass
- 15%** Amenity Tetraploid Ryegrass
- 30%** Strong Creeping Red Fescue

**100%**

**Pack Size:** 2kg, 10kg, 20kg

**Sowing Rate:** 35g/m<sup>2</sup>

**Mowing Height:** 20mm



## SUBURBAN

- Multi-purpose use
- Back lawns
- General landscaping
- Housing estates

An excellent multi purpose lawn and landscape mixture that establishes quickly, with high wear tolerance and good appearance.

### MIXTURE FORMULATION

- 55%** Perennial Ryegrass
- 35%** Strong Creeping Red Fescue
- 10%** Chewings Fescue

**100%**

**Pack Size:** 10kg, 20kg

**Sowing Rate:** 35g/m<sup>2</sup>

**Mowing Height:** 20mm



## FORMAL

- Quality lawns and landscape areas
- Fine appearance
- Reduced mowing

Produces an attractive, fine, dense quality sward, for use on non ryegrass ornamental lawns and landscape areas. The inclusion of rhizomatous grasses provides resistance and strength to the sward.

### MIXTURE FORMULATION

- 25%** Strong Creeping Red Fescue
- 50%** Chewings Fescue
- 20%** Slender Creeping Red Fescue
- 5%** Browntop Bent

**100%**

**Pack Size:** 2kg, 10kg, 20kg

**Sowing Rate:** 30-50g/m<sup>2</sup>

**Mowing Height:** 15mm

Please contact one of the team for our full range of amenity mixtures

---

## DEMONSTRATION SITE

**The GFP demonstration ground is essential to our business. Here samples of new and more established varieties are grown under a normal farmer input regime on soil types and conditions in keeping with our region. If varieties are judged to be suitable for our farmer clients they will appear in our portfolio of varieties for sale. This year we will be including a selection of Belmont game cover and grass leys in the trials including our popular Topcut, Smithfield and Flexisward mixtures.**

It is invaluable to use breeders and private trials data along with our own assessments on a daily basis, to have the confidence in new products and know the pros and cons of each variety.

We welcome anyone to visit our site for a tour at anytime of the growing year. Alternatively we have open days throughout July August and September where visitors will get a guided plot tour along with GFP commentary.









# A SPECIALIST SEED COMPANY OFFERING

All Certified Cereal Seeds - Pulses - Oilseeds  
Game Cover - Countryside Stewardship Requirements  
Agricultural & Amenity Grass Seed  
On-farm Mobile Seed Dressing & Grain Cleaning

T. 01652 636444    E. [info@gfpagriculture.co.uk](mailto:info@gfpagriculture.co.uk)

[www.gfpagriculture.co.uk](http://www.gfpagriculture.co.uk)



### **GFP (Agriculture) Ltd**

Pegasus Road, Elsham Wold Industrial Estate,  
North Lincolnshire, DN20 0SQ

Tel: **01652 636444**

Website: **[www.gfpagriculture.co.uk](http://www.gfpagriculture.co.uk)**

---

Every care is taken in the preparation of this booklet, but it should only be used as a guide. GFP Agriculture Ltd **cannot** accept any responsibility for losses incurred as a consequence of this information.